



# INFR/ABEL

# How NIS became our new normal

A very short introduction



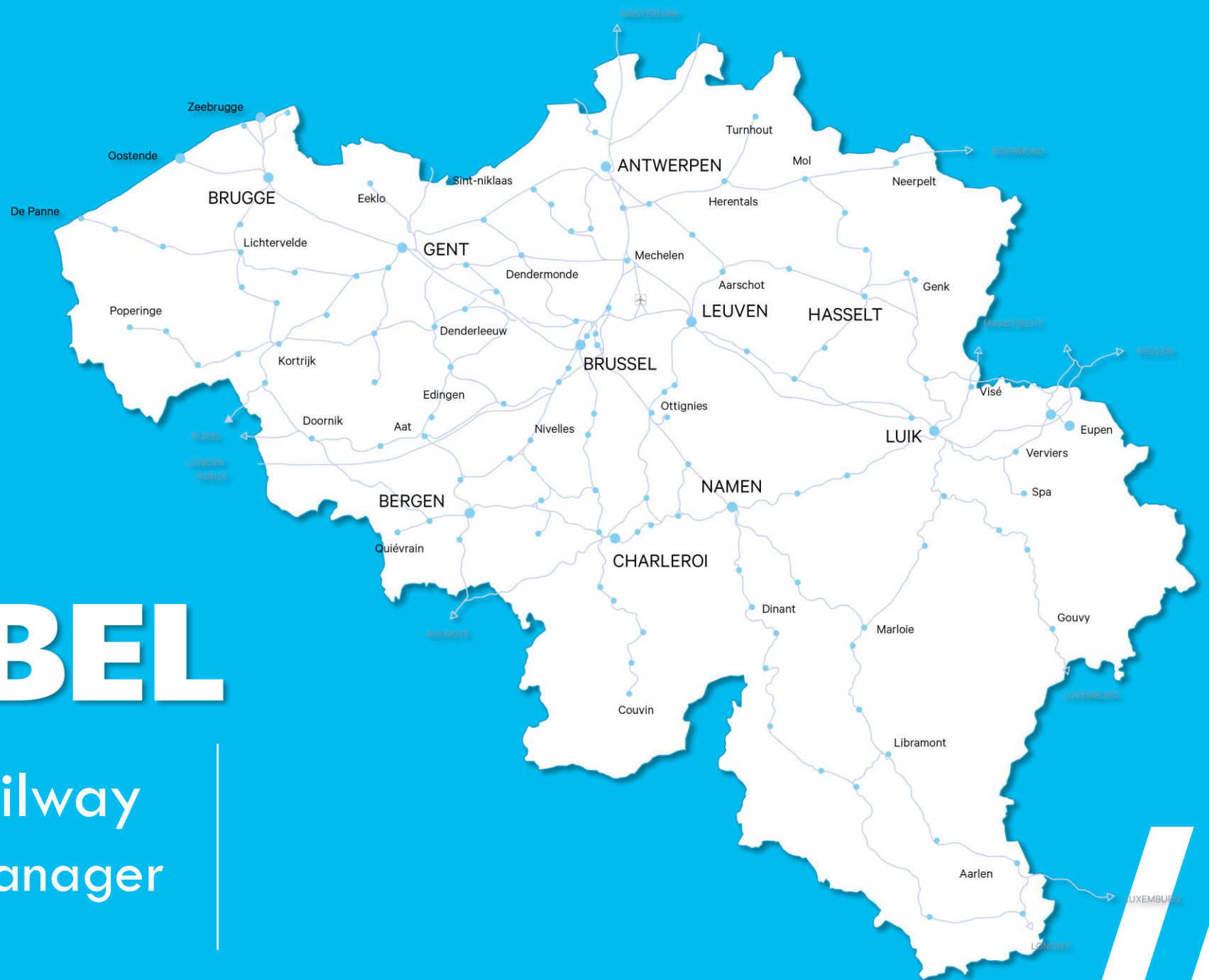
Anaïs Druart - Security Implementation

Cédric Cecotti - CISO



# INFRABEL

The Belgian Railway  
Infrastructure Manager



# INFRABEL



We manage, maintain and develop the railway infrastructure/network to connect people and companies and build the mobility of tomorrow



Every day, we manage the rail traffic on the whole Belgian railway network so thousands of passengers safely reach their destination



## Maintenance

Maintain and renewal  
of the railway infrastructure  
(= base for a high-quality network)



## Traffic Management

Management of rail traffic  
capacity (train paths) in real time  
and safety systems



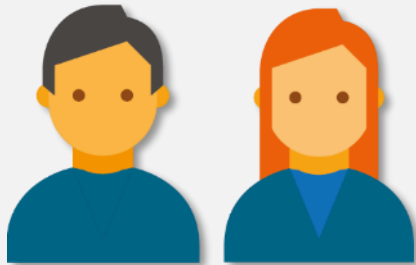
## Build

Study and extension of the  
railway network, management of  
infrastructure projects



# Our Customers

## Passenger Transporters



**+250 millions**  
per year

National

**+3.600 Trains**  
per weekday



International

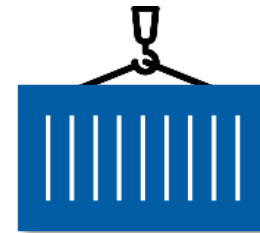
**+250 Trains**  
per weekday



## Freight Transporters



**+150.000**  
goods paths per year



**+60 millions**  
tonnes of goods  
transported per year



# Did you know ?

**+6000**  
km of lines cover virtually the whole of the territory

**+1.700**  
active level crossings

**+11.000**  
civil engineering structures  
(bridges and tunnels)



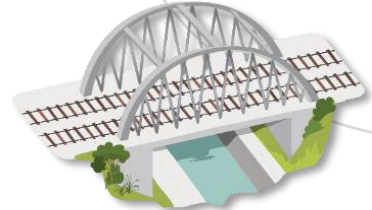
**10**  
signal boxes to manage the entire rail traffic



**+9.000**  
employees



**+10.000**  
signals act as interface between the signal box and the driver



**+4.000**  
points and crossings  
(main track switches)

# Our scope



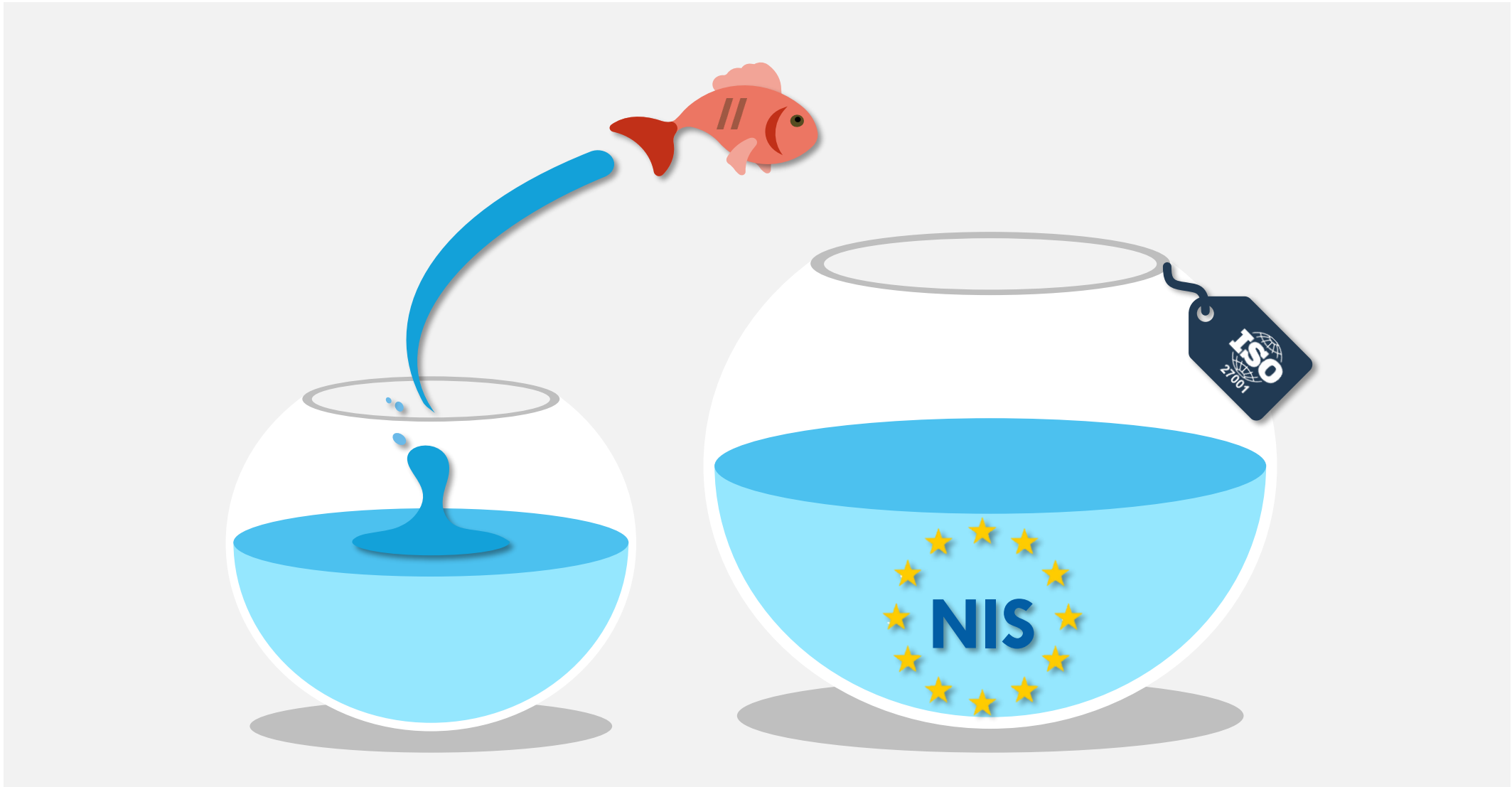


# Our journey with NIS





# Challenge accepted !





# Cyber Risks Management



Cyber  
Resilience

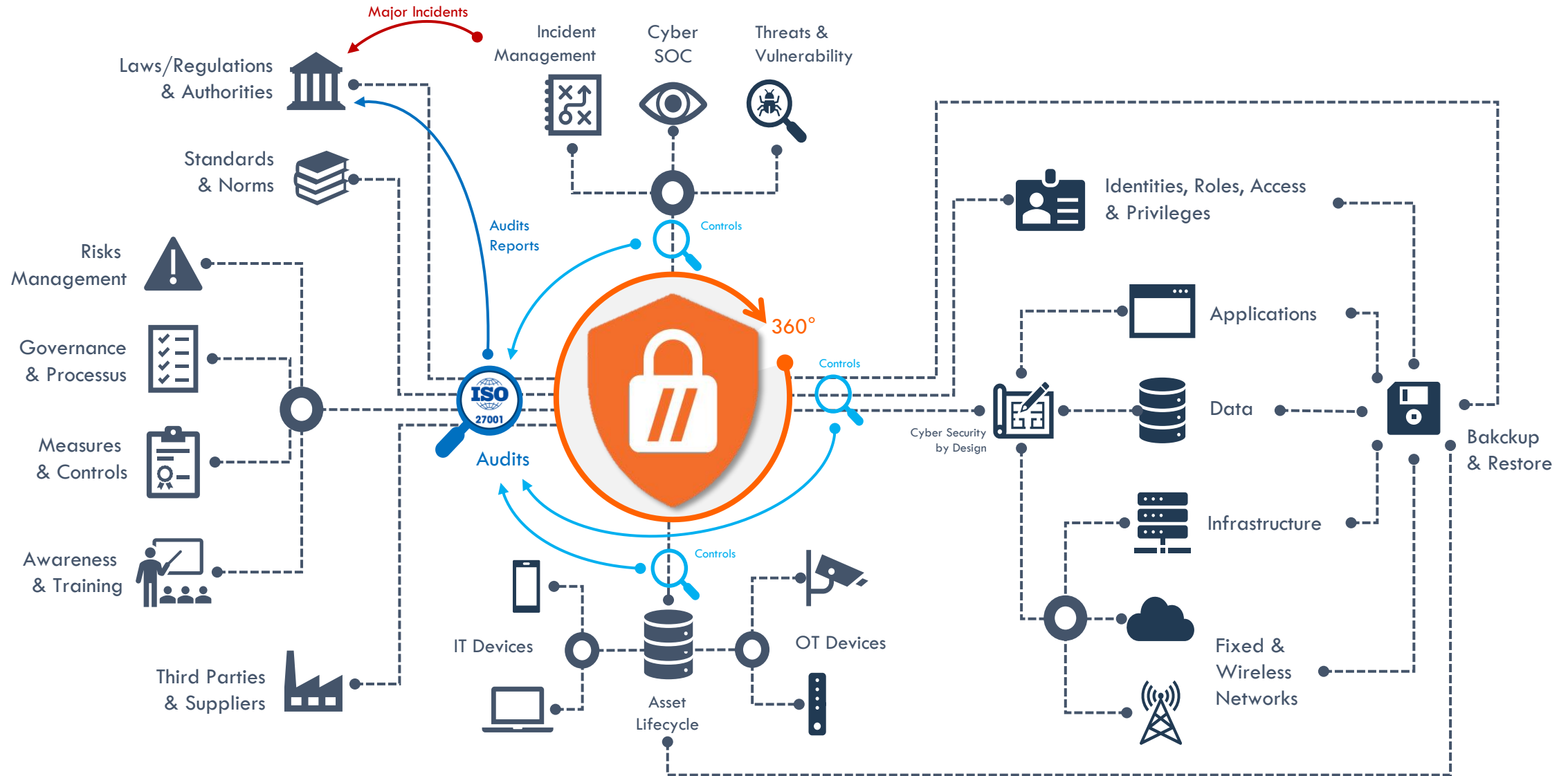


Business  
Continuity

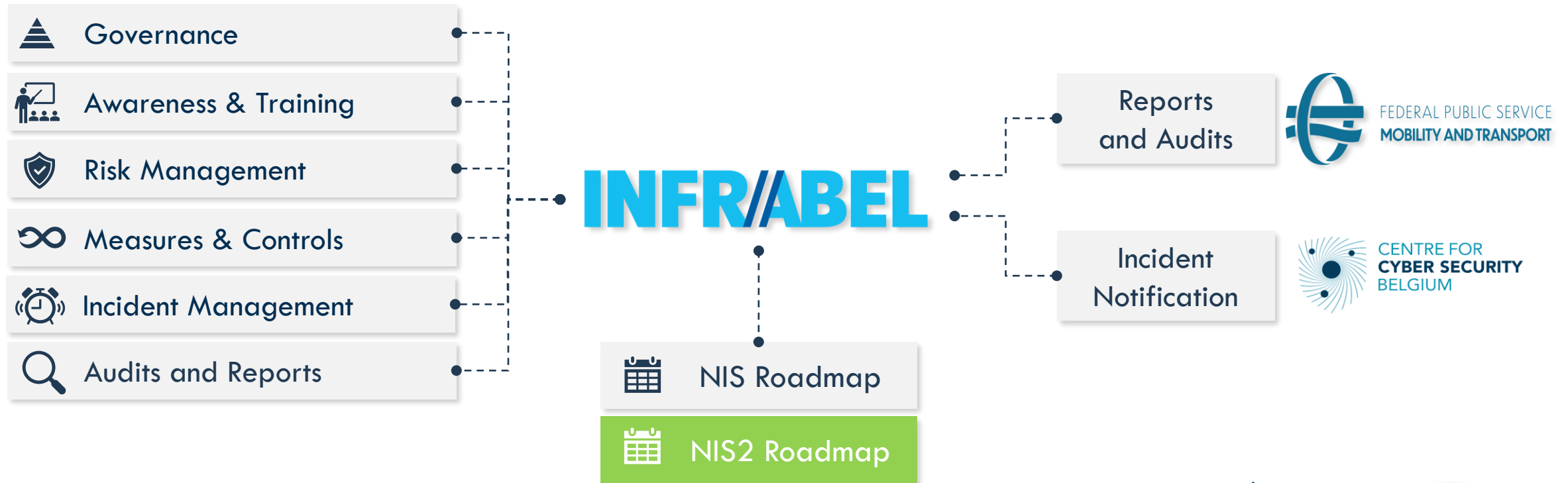
# Finding the right balance



# We adopt an holistic approach



# What we have done (so far)



# NIS created challenges...



## Awareness and Education



Cybersecurity is not so easy to **infuse**, and specially for ISO27001 and audits



## Change Management



Adapting our **processes** to the requirements of Cybersecurity



## Mobilising Resources



Right **financial, human and technical** resources are keys !

# ...but NIS made us better and stronger !



## Transversal Objectives



Cybersecurity is included in our **Business Plan** and in the « Contrat de Performance »



## Higher Maturity



Our maturity is **growing**, not only in Cybersecurity, for a stronger resilience



## Adaptative Controls



Adaptative Controls allows us to **be sure** that we achieve our roadmap

# What's Next ?



## Prepare for NIS 2



We are preparing Infrabel for the **new NIS 2 Law**



## Standards & Norms



We need to have the right controls adapted to our **OT context**

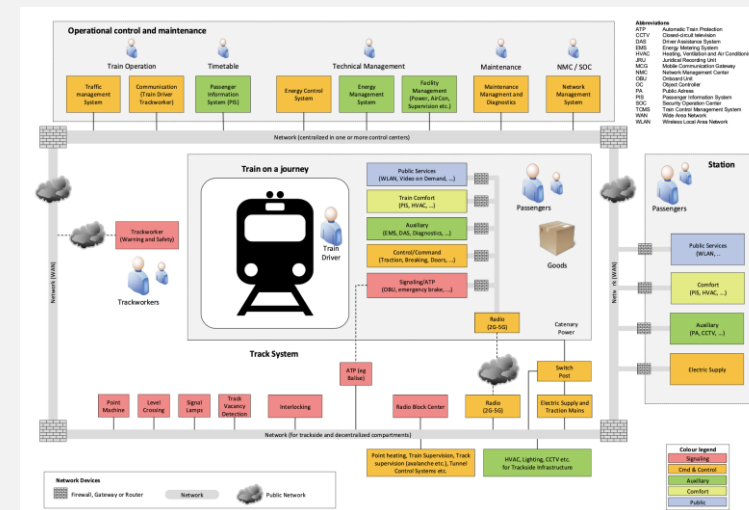
Business Zone → IT



Control Zone → OT



EN TS 50701





# Your CISO is in control 😊



Cybersecurity is easy when you use « NIS » as the magic word.



Thank you

